



Vision offers a range of premium profiles for commercial and domestic applications, designed to protect and inspire with variable mood accents.

The range is specifically designed to accept universal LED systems and RGB for Steps, Listello, Edges and Skirting offering unlimited freedom of design.

Developed with simplicity in mind, the range of supporting hardware offers the most frequently installed systems with Polycarbonate Diffusers that eliminate the hotspots.

- 220 & 110V Drivers
- Durable aluminium carriers
- Efficient LED 4.8W or 9.6W per metre
- Average lifespan 40,000 Hours
- Simple installation and selection
- Cutting Intervals - 25mm for LED and 50mm for RGB
- IP65 Certified LED and RGB
- 120 LED's per metre
- UL approved diffusers
- Enhanced safety
- Manufactured to A-A++ energy rating
- Remote control and Smart Home options available
- 3M VHB adhesive backing

### Quick Look



Step



Skirting



Guidance



Angular



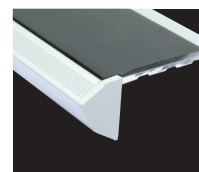
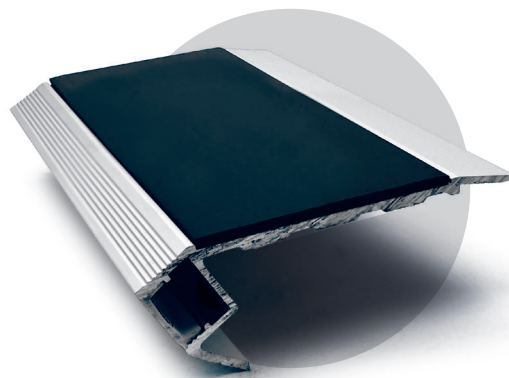
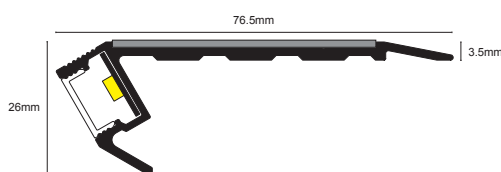
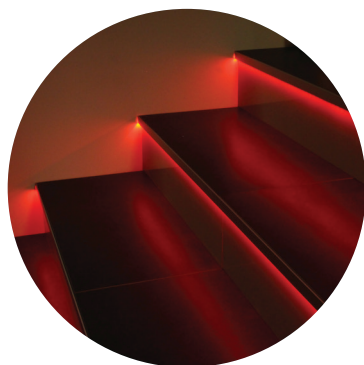
RGB



Multiple White

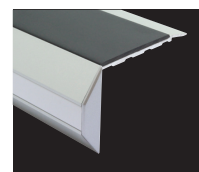
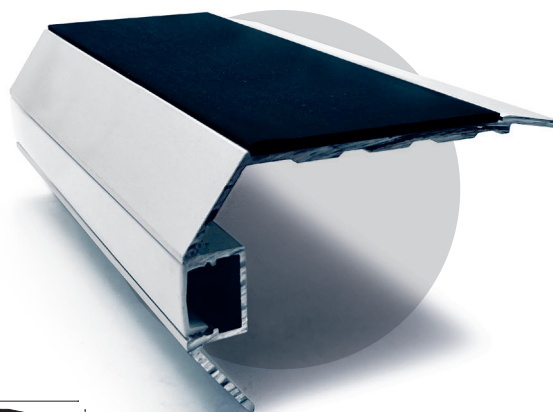
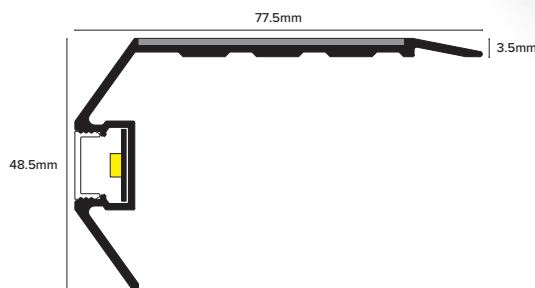
## Nosing: Light Down (NALR50)

Commercial style stair nosing incorporating a range of non-slip PVC based inserts and Vision LED, CCT and RGB lighting systems in a 'light down' configuration. Supplied in anodised Matt Silver finish, others finishes are available on request. Standard length is 2.8m but we offer a bespoke cutting and drilling service if required and end caps to complete the professional aesthetic. Complete with frosted polycarbonate diffuser to ensure optimum light dispersion.



## Nosing: Light Out (NSLR50)

Commercial style stair nosing incorporating a range of non-slip PVC based inserts and Vision LED, CCT and RGB lighting systems in a 'light out' configuration. Supplied in anodised Matt Silver finish, others finishes are available on request. Standard length is 2.8m but we offer a bespoke cutting and drilling service if required and end caps to complete the professional aesthetic. Complete with frosted polycarbonate diffuser to ensure optimum light dispersion.



## Insert Options (see details overleaf)

### Standard Insert



### Tredsafe® Insert



## Standard PVC Insert

A REACH compliant flexible PVC extrusion grade specifically designed for non-scuff stair nosing applications with good anti-slip properties; to our knowledge our inserts achieve the best slip resistance results in the market.

### Slip Resistance

Inclined Platform Test DIN 51130:2010

Category: **R11**

Slip Resistance BS 7976-2:2002

Pendulum Test

PTV Average Dry Value: **66**

PTV Average Wet Value: **54**

## Tredsafe® Insert

Tredsafe® insert is manufactured from a special blend of P.V.C., silica quartz and polymeric plasticiser giving an homogeneous hard wearing anti-slip flooring for wet and dry conditions. (Meets British Standard for Sheet Vinyl and Vinyl Tiles BS3261:1973).

Tredsafe® insert is resistant to attack from ultraviolet light, oil, grease, petrol, salt, dilute acids and alkalis, common household chemicals and detergents. Organic solvents will soften Tredsafe® insert.

Tredsafe® insert is produced with a polyurethane coating which reduces dirt retention. The three dimensional pyramid pattern which provides excellent slip resistance in the wet will require more care than a smooth flooring surface. As with any flooring, regular maintenance is important to prevent excessive soiling. Cleaning is best achieved by scrubbing with a bristle brush in conjunction with warm soapy water. Commercial cleaning machines such as the "Scrub-Vac" are also suitable

### Slip Resistance

Inclined Platform Test DIN 51130:2010

Category: **R11**

Slip Resistance BS 7976-2:2002

Pendulum Test

PTV Average Dry: **57**

PTV Average Wet: **47**

### Residual Indentation

(2.5mm dial gauge) Mean 0.05mm

### Dimensional Stability

80°C for 6 hours) 0.12%

### Moisture Movement

23°C for 24 hours) 0.02%

### Elastic Property

(Tensile Strength 2.48mj/m<sup>3</sup>)

### Heat Ageing

(70°C for 15 days) Exudation None, Colour Change None

### Wear Resistance - Taber Abrader

1kg load = 1000 revs.

H18 wheel @ 60 rpm = 0.6gm

Weight Loss

### Flammability and Smoke Density

Flame Spread = 0














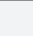



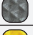


Smoke Dev = 7

Australian Std Test: 1530.3.1982

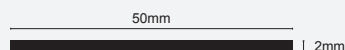
Mean Critical radiant flux 10.3kw/m<sup>2</sup>

Mean smoke development rate 85 percentage minutes

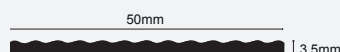
Australian Std Test: AS/ISO 9239.1 2003

Insert	LRV	
<b>Standard</b>		
01 White	79.9	
16 Black	4.5	
20 Brown	9.1	
25 Beige	41.1	
27 Canvas	53.2	
30 Red	10.6	
43 Dolphin Grey	27.6	
44 Ice Grey	42.1	
46 Midnight Grey	12.8	
47 Yellow	55.7	
48 Cobalt Blue	9.2	
58 Cloud	59	
68 Haze	66.2	
78 Sand	70.3	
<b>Tredsafe®</b>		
601 White	49.9	
616 Black	4.6	
621 Safety Blue	10.8	
643 Dolphin Grey	11.5	
647 Yellow	48.1	
<b>Channel</b>		
81 Matt Silver		

### Standard



### Tredsafe®



The UK slip resistance group recommends the following guidelines;

PTV	Slip Potential
0-24	High
25-35	Moderate
<b>36+</b>	<b>Low</b>

International testing houses consider the following guidelines;

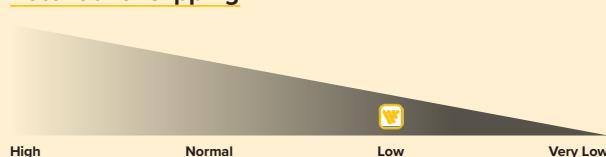
Ramp	Slip Potential
R9	High
R10	Normal
<b>R11</b>	<b>Low</b>
R12	Very Low

## Results

Insert	Inclined Platform Test DIN 51130:2010*	Category	Pendulum Test BS 7976-2:2002 <sup>#</sup>	
			Dry	Wet
Standard	22.9°	R11	66	54
Tredsafe®	24.7°	R11	57	47

\*Average of Six Shod Results (Corrected). <sup>#</sup>PTV Average Value.

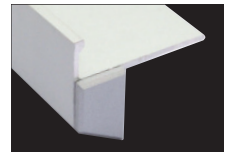
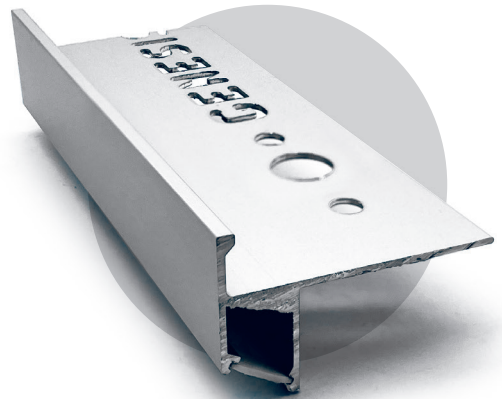
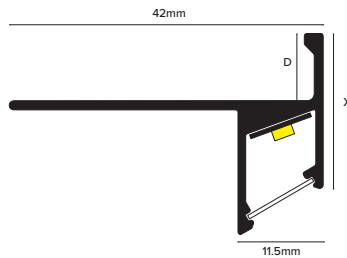
## Potential of slipping





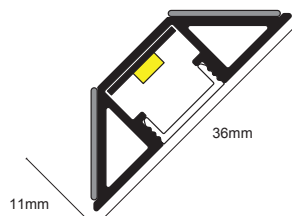
## Step Edge (NLD)

NLD is a tile-in step edge incorporating Vision LED, CCT and RGB lighting systems. Designed to emphasise and accentuate each individual stair, illuminating the riser below to create a stunning stair case. Supplied in anodised Matt Silver finish with frosted polycarbonate diffuser for optimum light dispersion. Available in 9mm or 11mm depths and a standard length of 2.8m. We also offer end caps to complete the professional aesthetic.



## Retro Internal Trim (TRV)

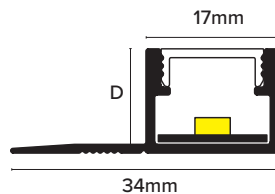
A versatile profile designed for internal corner installations for downlighting or vertical fitting used in conjunction with Vision LED, CCT and RGB lighting systems. Supplied in anodised Matt Silver finish with frosted polycarbonate diffuser for optimum light dispersion and self-adhesive for easy installation. Rated IP64 under IEC standard 60529 - resistant to water splashes from any direction.





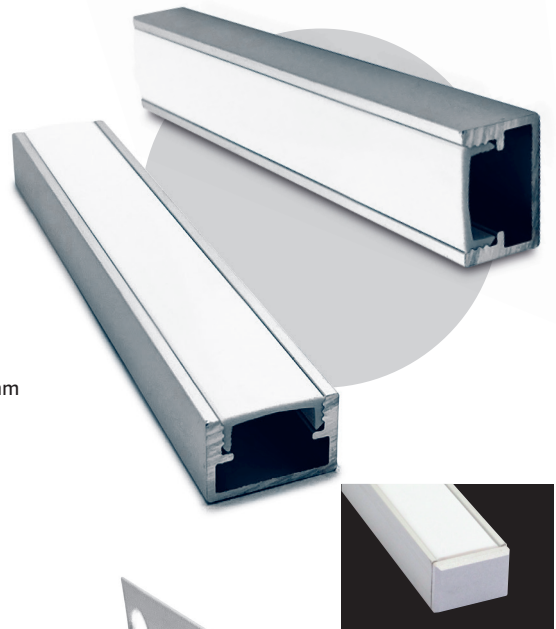
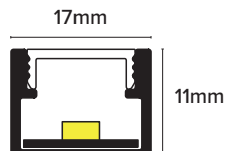
### MultiFix (TLD)

A versatile tile-in profile incorporating Vision LED, CCT and RGB lighting systems. Can be used in wall or floor installations to break up large expanses of tile. Supplied in anodised Matt Silver finish with frosted polycarbonate diffuser for optimum light dispersion. Available in 10mm or 12mm heights and a standard length of 2.8m. We also offer end caps to complete the professional aesthetic.



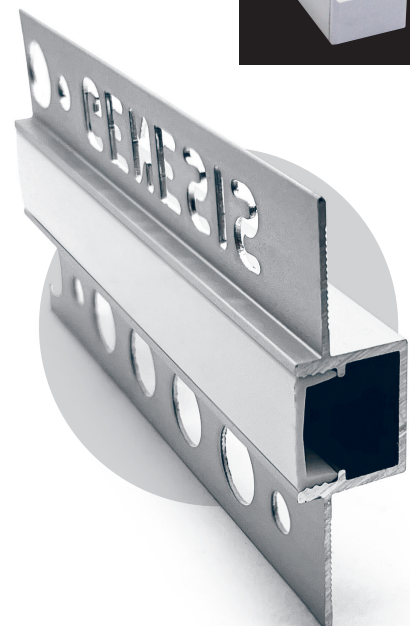
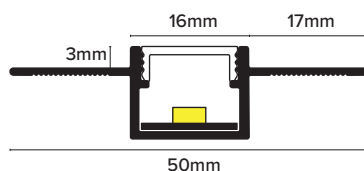
### Guidance / Feature Strip (TUD)

A tile-in profile incorporating Vision LED, CCT and RGB lighting systems. Can be used in wall or floor installations to break up large expanses of tile or create a pathway in the flooring surface. Supplied in anodised Matt Silver finish with frosted polycarbonate diffuser for optimum light dispersion. Available in 10mm or 12mm heights and a standard length of 2.8m. We also offer end caps to complete the professional aesthetic.



### 3mm Plaster Profile (TPD)

This plaster profile allows for you to transform your space effortlessly with a straight forward installation. Simply secure to aluminium flange to plasterboard and skim over.



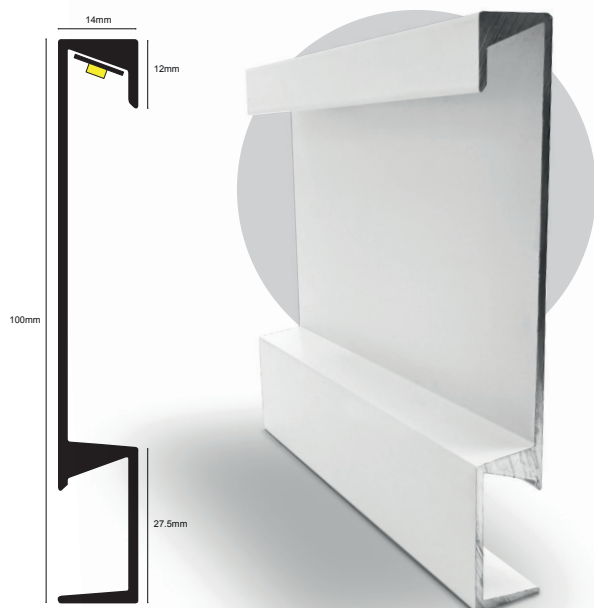
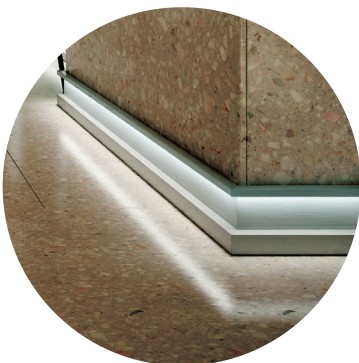
### Skirting (KLD)

A retrofit aluminium skirting profile incorporating Vision LED, CCT and RGB lighting systems. Designed to create a border of low-level light which encapsulates the room. Supplied in anodised Matt Silver and Brushed Silver finishes with frosted polycarbonate diffuser for optimum light dispersion. Available in 100mm height and a standard length of 2.8m. We also offer end caps to complete the professional aesthetic.

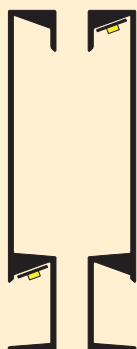


### Universal LED Skirting (KRD)

A retrofit aluminium skirting profile incorporating Vision LED, CCT and RGB lighting systems. Designed to create a border of low-level light which encapsulates the room. Supplied in anodised Matt Silver and Brushed Silver finishes with frosted polycarbonate diffuser for optimum light dispersion. Available in 100mm height and a standard length of 2.8m. We also offer end caps to complete the professional aesthetic.



### Dual Configurations



Before installing you should make sure you have planned out your wiring and power supply options, Genesis LED's help is available online or from our customer service team,

### Nosing Profiles

1. Ensure the steps are dry, clean, free of debris, level and even.
2. If Predrilled use the drill holes to mark steps for drilling location.
3. Drill and Plug the steps.
4. Apply suitable adhesive to the underside of the nosing and apply nosing to the step.
5. Screw down the step with the appropriate size screws.
6. Apply insert (if separate) or insert pip to cover the screw head.

Inserts: All inserts should be cleaned using a neutral detergent and thoroughly rinsed with clean water. Ensure all inserts are dry prior to receiving foot traffic.

### NLD Profiles

1. Measure and cut the profile to desired length
2. If required, fix tile to riser
3. Bed the profile into the adhesive ensuring the adhesive penetrates through the anchoring holes. Adjust accordingly and position the profile so the front edge covers the tile on the riser if fitted.

### TRV Profiles

1. Measure and cut the profile to the desired length.
2. Ensure the area where the profile will be fixed is dry, clean, level and even.
3. Remove the protective backing from the self-adhesive strips and press into desired position.

### TLD / TUD Profiles

1. Select profile according to tile thickness.
2. Trowel tile adhesive over the area that forms the perimeter of the tiled covering.
3. Press the perforated anchoring leg (TLD only) into the tile adhesive and align, mechanical fix if required (wiring and lighting should be in situ before bedding into any adhesive)
4. Trowel additional adhesive over the perforated anchoring leg (TLD only) to ensure full coverage.
5. Solidly embed the tiles so that the tiled surface is flush with the top of the profile, the profile should not be higher than the tiled surface, but rather up to approximately 1 mm lower.
6. Fill the joint completely with grout.

### Skirting Profiles

Ensure that the surface where the profile is being applied is smooth, dry and free from any contaminants such as loose paint, dust and grease.

1. Measure and cut the metal skirting to the required length using a proprietary blade for the material and cutting tool used.
2. Apply suitable cartridge adhesive to the back of the profile.
3. Offer the profile to the wall and apply even pressure along the entire length to ensure full contact of the substrate.
4. To provide neat finishes to cut ends, end caps are recommended.

### TPD Profiles

1. Measure the desired height for the LED light and cut the plasterboard at that height.
2. Fit the profile on top of the cut plasterboard, cutting the profile to length if required, and secure it with drywall screws, plasterboard adhesive, or a stapler.
3. Measure and cut the upper plasterboard, then lower it down to the profile and secure it again.

### Maintenance

Genesis Vision Profiles don't require any special maintenance. Oxidation films on Aluminium may be removed with a common polishing agent; however, they do reoccur. Damaged anodised finishes may only be repaired by recoating.

Aluminium must be tested to verify its suitability if chemical stresses are anticipated.

Cementitious materials, in conjunction with moisture, become alkaline. Since aluminium is sensitive to alkaline substances, exposure to the alkali (depending on the concentration and time of exposure) may result in corrosion (aluminium hydroxide formation). Therefore, it is important to remove adhesive or grout residue from visible surfaces. In addition, ensure that the profile is solidly embedded in the setting material and that all cavities are filled to prevent the collection of alkaline water.

The anodised layer creates a finish that retains a uniform appearance during normal use. The surface, however, is susceptible to scratching and wear and may be damaged by tile adhesive, mortar, or grouting material. Therefore, setting materials must be removed immediately. Otherwise, the description regarding aluminium applies.

### Technical Details

Genesis Aluminium Profiles are available in different anodised finishes and powder coated finishes – All natural Aluminium (Mill Finish) has an oxide film of approx 0.2 microns, when Mechanically & Chemically polished the anodising process increases this to 5 microns, up-to 20 microns for the Matt finish and 100 for powder coated.

#### Aluminium AA 6063 T6 / UNS A96063 anodised to DIN 17611

Si%	0.2-0.6
Fe%	0.35
Cu%	0.1
Mn%	0.1
Mg%	0.45-0.9
Zn%	0.1
Ti%	0.1
Cr%	0.1
Al	Balance



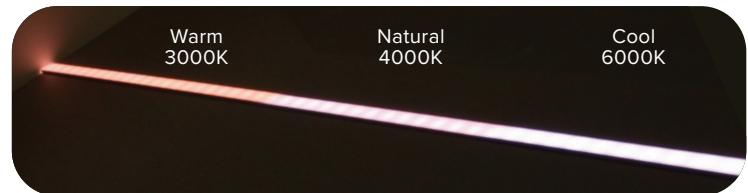
## LED System

Vision offers a range of premium profiles for commercial and domestic applications, designed to protect and inspire with variable mood accents.

The range is specifically designed to accept universal LED systems and RGB for steps, listello, edges and skirting offering unlimited freedom of design.

Developed with simplicity in mind the range of supporting hardware offers the most frequently installed systems with polycarbonate diffusers that eliminate hotspots.

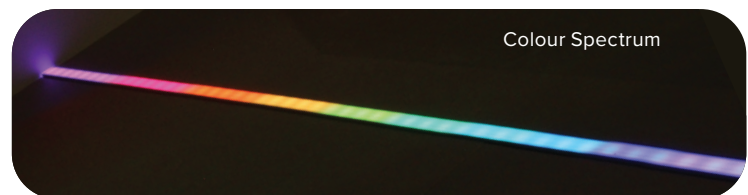
- Efficient 4.8W and 9.6W power options, manufactured to A-A++ energy ratings
- Average lifespan 40,000 hours
- IP65 certified protection
- 120 LED per metre for even light dispersion
- 25mm cutting intervals
- Simple installation
- Single zone



## RGB System

This dynamic system offers a range of mood lighting which allows the user to change colours and dim brightness by remote control in a maximum of 4 zones.

- 14.4W power
- IP65 certified protection
- 60 LED per metre
- Remote and Wi-Fi control available
- Can produce any colour combination of red, green, blue light
- Also offers three colour temperatures of white light – Cool, Natural and Warm
- Multi-zone



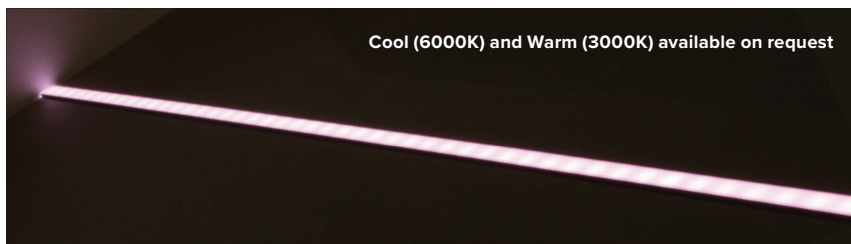
## Safety

All LEDs, drivers and components are CE marked and tested to the following EN standards:

- EN 55015:2013 • EN 61547:2009 • EN 61000-3-2:2014 • EN 61000-3-3:2013

## Natural White 4000K

Safe and secure with 12V IP65 protection class as standard and premium 4.8W or 9.6W 120 LED's per metre. To achieve the optimal effect, our CCT option offers three temperatures in a single length.



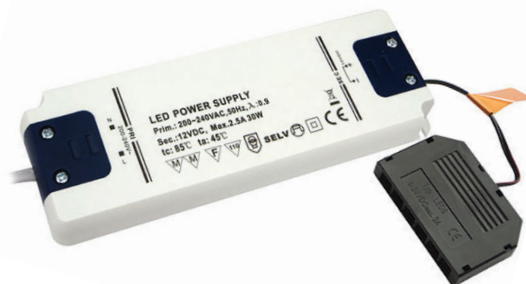
Cool (6000K) and Warm (3000K) available on request

## 12V Drivers

Selecting the right driver is easy – use the below formula to find the best option for your installation:

$$\text{Total Power (W)} = \text{Length of LED} \times \text{Power Rating of LED (W)}$$

**Add 3 additional ports using LEDCON  
DO NOT exceed driver wattage**



## Smart Drivers

Vision Smart Drivers can be used to control lights using a compatible smart speaker or smart hub. This allows the user to turn the light on and off, adjust brightness and change the colour of the light using their voice or smartphone.

*"Alexa, dim the lights"*



### For example:

5 metres of Vision 9.6W LED tape uses a total of 48W. This installation will need to use a driver with a rating of at least 50W. The perfect option would be our 50W LED driver LDD50.

## Remote Control Options

**Need more control?** Vision is compatible with single and multi-zone remote control, all you need is a receiver and remote control handset.

**FOR REMOTE CONTROLS YOU MUST UPGRADE TO LUNDR DRIVERS**

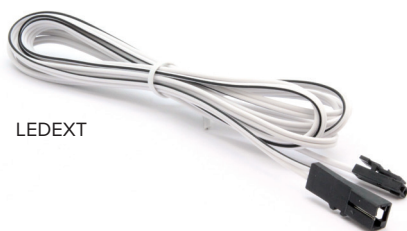
### Single Zone Options - 4 Ports



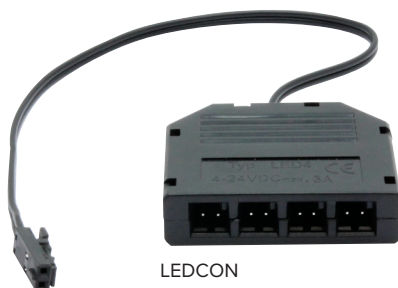
### Multi Zone Options (4 Zones / 3 Scenes)

1 x driver and 1 x receiver required per independent zone.  
Driver and remote sold separately.

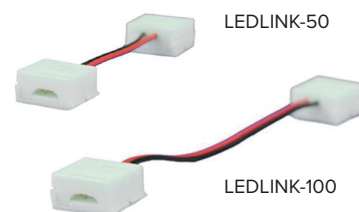




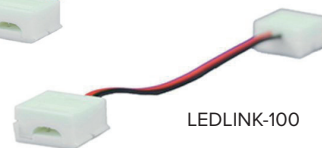
LEDEXT



LEDCON



LEDLINK-50



LEDLINK-100



LEDLINK-2000

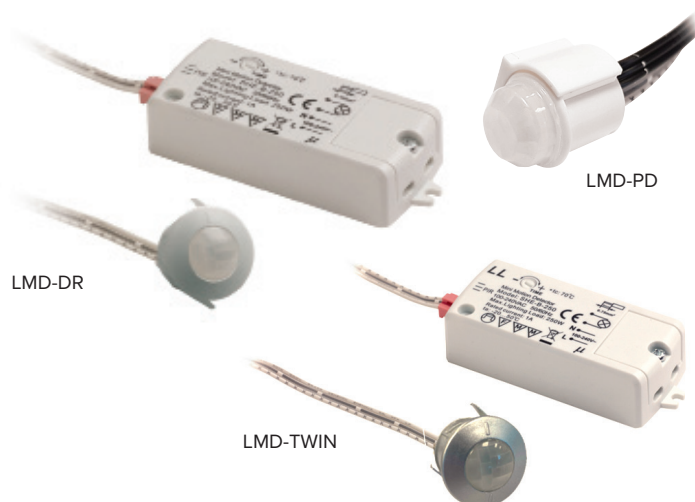


LEDLINK-1000



LED-PL

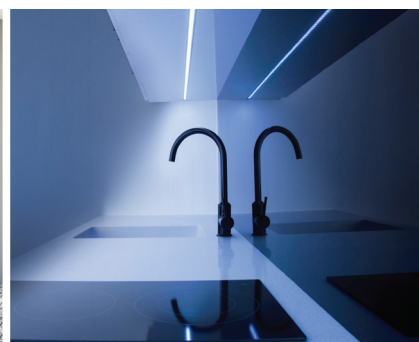
## Motion Sensors



LMD-DR

LMD-PD

LMD-TWIN





## Multiple White

Safe and secure with 12V IP65 protection class as standard and premium 9.6W 120 LED's per metre. The CCT option offers 3000K, 4000K and 6000K in a single length.

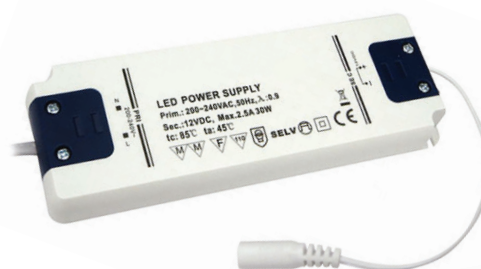


## CCT Drivers

Selecting the right driver is easy – use the formula to find the best option for your installation:

$$\text{Total Power (W)} = \text{Length of LED} \times \text{Power Rating of LED (W)}$$

**Add 3 additional ports using LCTCON  
DO NOT exceed driver wattage**



## Smart Adapter

Vision Smart Adapter can be used to control lights using a compatible smart speaker or smart hub. This allows the user to turn the light on and off, adjust brightness and change the colour of the light using their voice or smartphone.

*"Alexa, dim the lights"*



### For example:

5 metres of Vision 9.6W LED tape uses a total of 48W. This installation will need to use a driver with a rating of at least 50W. The perfect option would be our 50W LED driver LUNDR50.

## Remote Control Options

**Need more control?** Vision is compatible with single and multi-zone remote control, all you need is a receiver and remote control handset.

### Single Zone Options - 4 Ports



### Multi Zone Options (4 Zones / 3 Scenes)

1 x driver and 1 x receiver required per independent zone.  
Driver and remote sold separately.



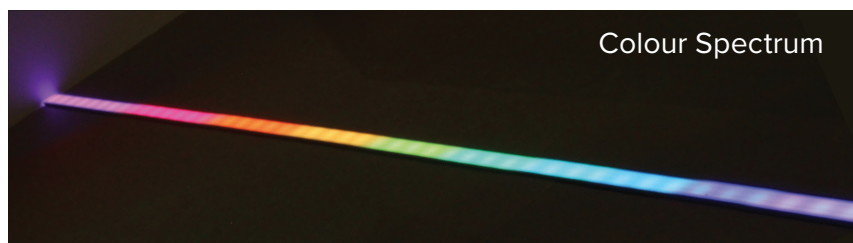
## Accessories



## RGB

This dynamic system offers a range of mood lighting powered by 12V IP65 protection, the 60 LED per metre powers varying colours with remote colour changing and dimming within a maximum of 4 Zones.

RGB is 14.4W per metre and cuttable every 50mm.



$$\text{Total Power (W)} = \text{Length of LED} \times \text{Power Rating of LED (W)}$$

## CCT Drivers

Selecting the right driver is easy – use the formula to find the best option for your installation:

**Add 3 additional ports using LGBCON  
DO NOT exceed driver wattage**

## Smart Adapter

Vision Smart Adapter can be used to control lights using a compatible smart speaker or smart hub. This allows the user to turn the light on and off, adjust brightness and change the colour of the light using their voice or smartphone.

*“Alexa, dim the lights”*



### For example:

5 metres of Vision 14.4W RGB tape uses a total of 72W. This installation will need to use a driver with a rating of at least 75W. The perfect option would be our 100W LED driver LUNDR100.

## Remote Control Options

**Need more control?** Vision is compatible with single and multi-zone remote control, all you need is a receiver and remote control handset.

### Single Zone Options - 4 Ports



### Multi Zone Options (4 Zones / 3 Scenes)

1 x driver and 1 x receiver required per independent zone.  
Driver and remote sold separately.



## Accessories















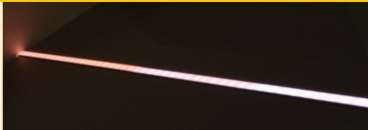





LGBEXT



LGBCON

**4  
PORTS**

Simply choose between Vision LED and RGB options to find the right illumination for your project.

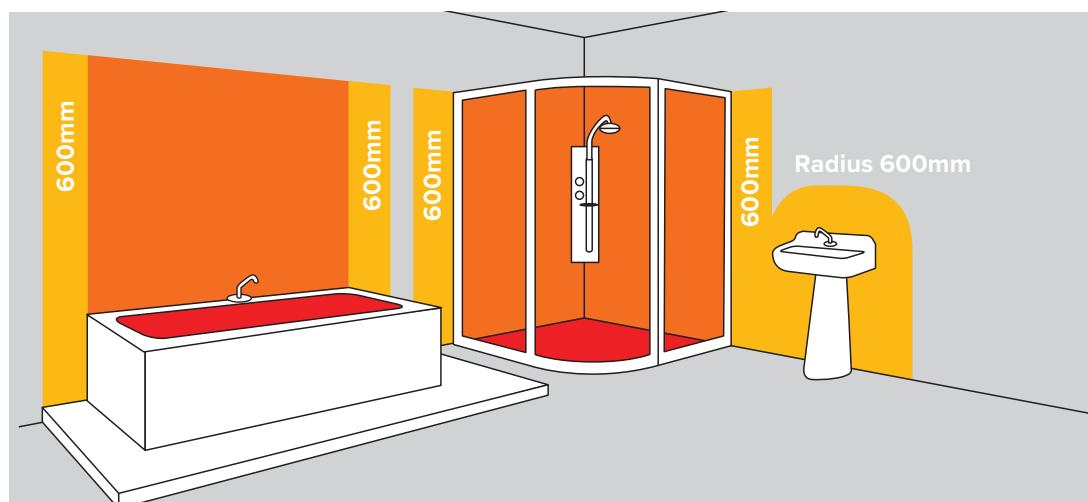
1. Lighting System	2. Driver	3. Receiver (optional) Single Zone or Multi Zone	
 NATURAL WHITE 4000K	→ 		
 NATURAL WHITE 4000K	→ 	→  or 	
 COOL WHITE 6000K NATURAL WHITE 4000K WARM WHITE 3000K	→ 	→  or 	
 RED GREEN BLUE	→ 	→  or 	

All vision products are designed to be easy to install and to work together seamlessly. Please consult the below overview for more information on the installation process.

## Zones

Zone 0 is IP67 and above  
Zone 1 is IP64 plus  
Zone 2 is IP64 plus

The tape should be at least 60cm from water source due to the wires / leads.



0  
ZONE

1  
ZONE

2  
ZONE

OUTSIDE  
ZONES



**Q: What does LED stand for?**

A: LED stands for Light Emitting Diode.

**Q: What is an IP rating?**

A: IP ratings are an indication of an electrical product's protection against solid objects such as dust and dirt and moisture. IP stands for ingress protection. The IP rating consists of two digits, the first number refers to the product's protection against solids, the second refers to its protection against liquids.

**Q: What is RGB?**

A: RGB simply stands for 'red, green and blue'. An RGB LED product has the ability to combine these three colours to produce over 16 million hues of coloured light.

**Q: Can I cut the LED / RGB strip at any point?**

A: The LED can be cut at 25mm intervals indicated by the copper strips.

**Q: Do you offer a bespoke service and if so what do I need to provide?**

A: Yes we do, just send details of the installation area, quantity of LED required and the effect you are trying to achieve.

**Q: Do you offer alternative voltages?**

A: Yes, our standard drivers work on an input voltage of 200-240v but we can supply 110v rated drivers if required.

**Q: What is the life span of LED?**

A: Our LED strips have an average lifespan of 40,000 hours

**Q: Can I replace my LED lights?**

A: The LEDs have a lifetime of around 40,000 hours. Under normal operating conditions, replacement will not be necessary but is possible if required. Should you need to replace your LED lights we recommend you consult a qualified electrician to perform the modification.

**Q: Do I require an Electrician to complete the installation?**

A: Yes, Wiring is against the law in the UK unless you are a qualified electrician.

**Q: Can I wire the lights to a standard light switch or dimmer switch?**

A: Yes, we recommend you consult a qualified electrician to assist with the installation.

**Q: Can I add more zones of LED at a later date?**

A: Yes, providing you are using a system which is compatible with multi-zone installation (eg. RGB), you can add or amend lighting zones using the remote control handset.

**Q: Can I use my own LED system with the Genesis profiles?**

A: Yes, but we recommend you follow our specification to achieve the optimal results.

**Q: How many ports to the Drivers have**

A: The LED has 6 ports and the CCT / RGB have 4

**Q: I have a single staircase with 20 steps @1m of CCT, each driver can only accept 4 LED's due to the number of micro ports so I will need 5 drivers. The catalogue states that it is one receiver per driver but I want this staircase to be all ZONE 1, Can you have 5 receivers all programmed to 1 zone?**

A: Yes, it is one receiver per driver but up to eight receivers can be programmed to the same zone on the same remote as long as you use the multi-zone remote and receivers.

**Q: Is a dedicated power lead required for each driver?**

A: No, multiple drivers can be wired to a single power lead if required, a qualified electrician will be able to advise further.

**Q: Is it possible to increase the number of connector ports supplied with each driver?**

A: Yes, we offer a Connector Block Extension which provides an additional four ports if required, however the extension does occupy one of the existing ports on the driver so this must be taken into account. The power limit of the driver is not affected by this adaptation so wattage restrictions must still be observed.

**Q: What is the specification of the wiring used in your LED system?**

A: The wiring is 2192Y 0.75mm.

