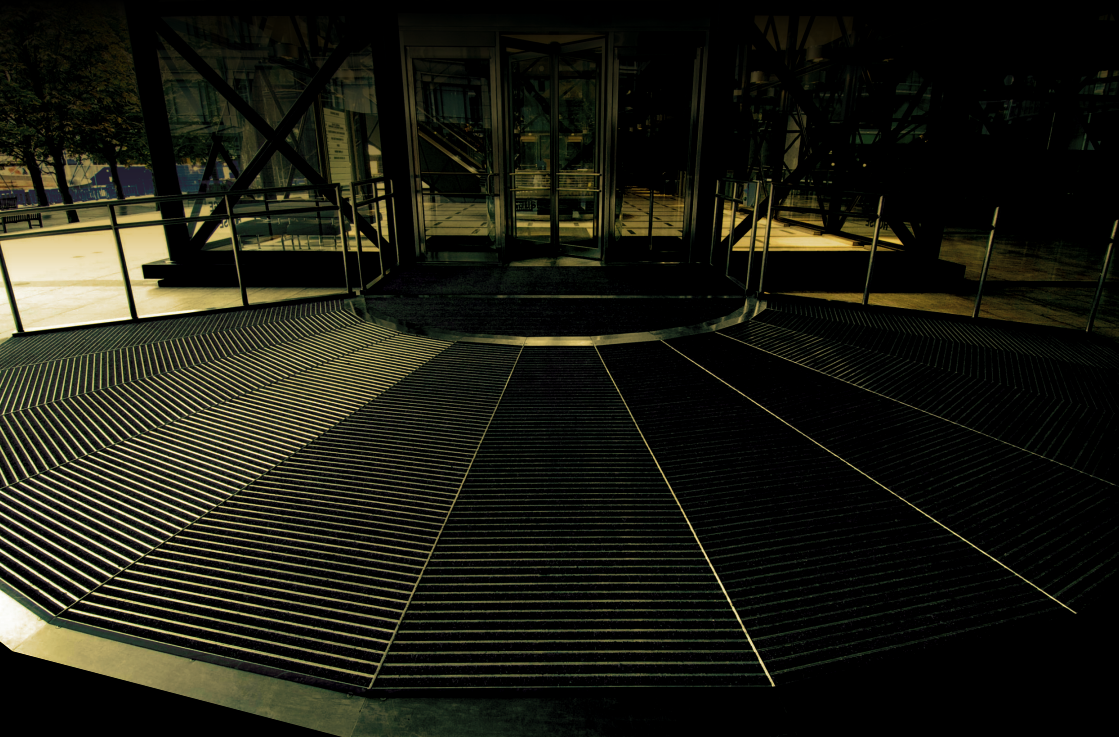


# TrakMat<sup>®</sup>

## ENTRANCE MATTING



  
**Genesis**  
The Perfect Finish

---

+44 (0)1642 713000 [info@genesis-gs.com](mailto:info@genesis-gs.com)  
[www.genesis-gs.com](http://www.genesis-gs.com)





# TrakMat<sup>®</sup>

## ENTRANCE MATTING

A range of matting systems encompassed by tile, rollable, interlocking and fixed designs, with a choice of open and closed construction, and options for both internal and external application.

# TrakMat®

## BARCELONA

TrakMat® BARCELONA is a closed construction interlocking tile, flexible modular matting system connected by locating lugs on side of tile creating a 'seamless' joint.

The integral lock-down assembly ensures the 50cm square modules, remain safe and secure under the heaviest of traffic. The non-PVC polymer base is simple to cut and shape and the modules are all interchangeable to ensure even wear for maximum economy.

100% recyclable.

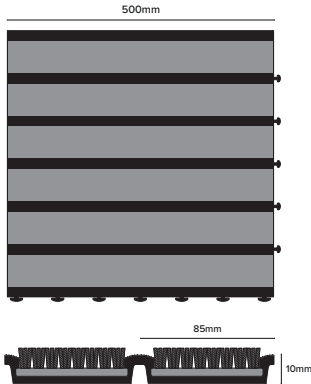
It is suitable for use in medium to heavy traffic areas such as offices, schools and apartments.

Available in 10mm depth.

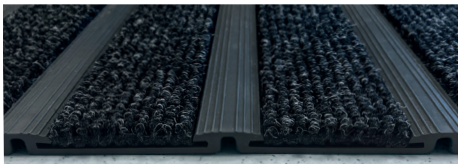
Supplied in 500 x 500mm tiles, 4 tiles per m<sup>2</sup>.



Anthracite



Code	Height (mm)	Finish
EM9200	10mm	Anthracite



**Closed Interlocking Construction**



**Internal**



**Medium-Heavy & Light Wheeled Traffic**



**10mm**



**2.5 kg/m<sup>2</sup>**



**Offices / Schools Apartments**



**Anthracite Insert**



TrakMat



+44 (0)1642 713000

[www.genesis-gs.com](http://www.genesis-gs.com)

Page 3

# TrakMat®

## STOCKHOLM

TrakMat® STOCKHOLM is a closed construction interlocking entrance matting system.

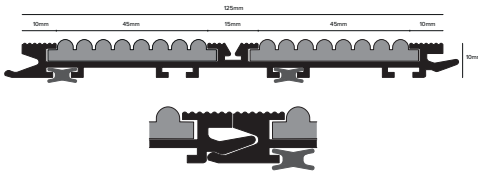
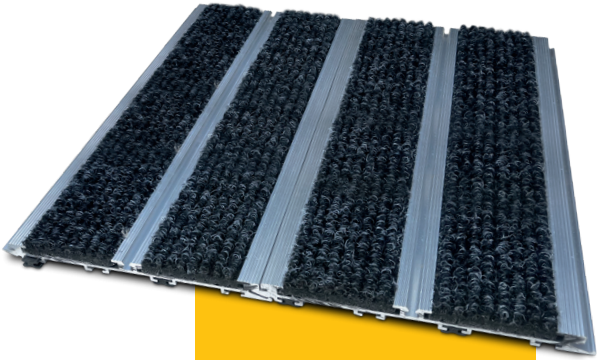
It is suitable for use in heavy traffic areas such as apartments, offices and Infrastructure.

### Technical Details

Mill aluminium profiles, standard 6060-T5, N755-2.

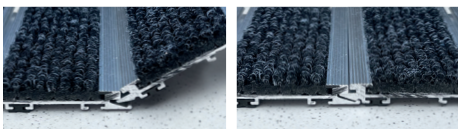
Heavy traffic polypropylene carpet insert.

2m<sup>2</sup> (8pcs) per box.



Anthracite Grey Natural Red

Code	Height (mm)	Finish
EM1200	10	Anthracite
EM1201	10	Grey
EM1202	10	Natural
EM1203	10	Red



**Closed Interlocking Construction**



**Internal**



**Heavy & all wheeled traffic**



**10mm**



**10 kg/m<sup>2</sup>**



**Apartments / Offices Infrastructure**



**4 Insert Options**



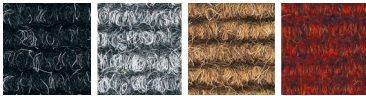
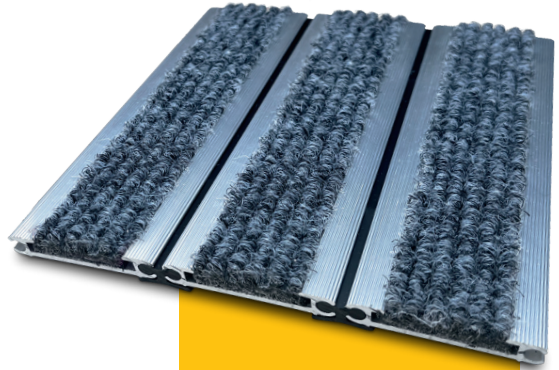
# TrakMat®

## PARIS

TrakMat® PARIS is a rollable grid matting system that is supplied in 12mm low profile thickness which is especially useful where surface mounting is preferred or in situations where it is not practical to form a recess. The extruded aluminium tread rails are assembled by means of a PVC hinge which features an integral damper strip.

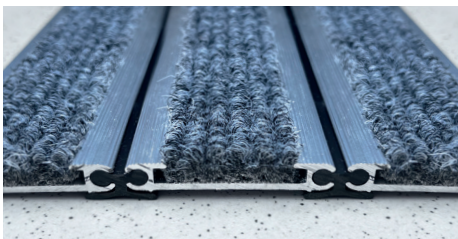
It is suitable for use in medium to heavy traffic areas such as apartments, offices and schools.

Rollable for easy cleaning.



Anthracite   Grey   Natural   Red

Code	Height (mm)	Finish
EM2410	12	Anthracite
EM2411	12	Grey
EM2412	12	Natural
EM2413	12	Red



### SUPPLY & FIT



**Closed Rollable Construction**



**Internal**



**Medium-Heavy & Light Wheeled Traffic**



**12mm**



**12 kg/m<sup>2</sup>**



**Offices / Schools Apartments**



**4 Insert Options**



TrakMat



+44 (0)1642 713000   [www.genesis-gs.com](http://www.genesis-gs.com)

Page 5

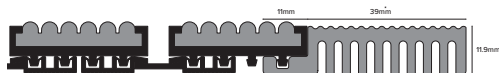
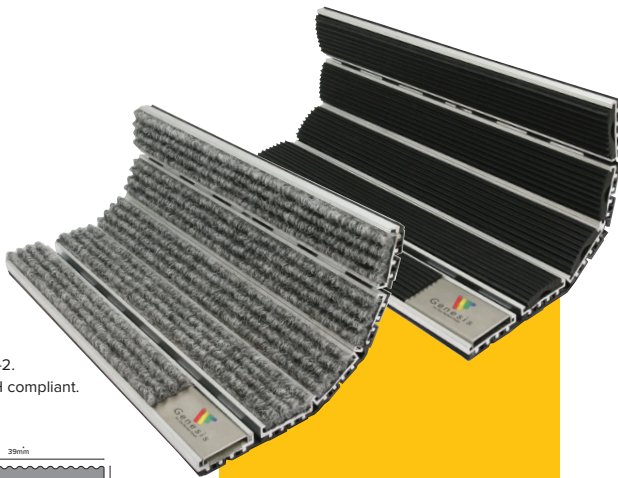
# TrakMat®

## LONDON

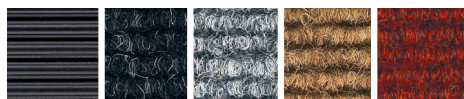
TrakMat® LONDON is made up of heavy duty dust protection rubber or carpet strips, Inserted mill aluminium profiles sections. These sections are connected with semi-rigid PVC strips underneath, reducing noise and allowing the matting to be easily packed up and relocated.

### Technical Details

Mill aluminium profiles, standard 6060-T5, N755-2.  
Heavy traffic polypropylene carpet insert. REACH compliant.



\*Cut to required width, up to 39mm.



Black  
Rubber

Anthracite

Grey

Natural

Red

### TrakMat® Fluted Rubber

Code	Height (mm)	Finish	Size
EM8950	10	Black	m <sup>2</sup>
EM8951	12	Black	m <sup>2</sup>
EM8952	17	Black	m <sup>2</sup>

### TrakMat® Loop Pile

Code	Height (mm)	Finish	Size
EM8900	10	Anthracite	m <sup>2</sup>
EM8901	10	Grey	m <sup>2</sup>
EM8902	10	Natural	m <sup>2</sup>
EM8903	10	Red	m <sup>2</sup>
EM8910	12	Anthracite	m <sup>2</sup>
EM8911	12	Grey	m <sup>2</sup>
EM8912	12	Natural	m <sup>2</sup>
EM8913	12	Red	m <sup>2</sup>
EM8920	17	Anthracite	m <sup>2</sup>
EM8921	17	Grey	m <sup>2</sup>
EM8922	17	Natural	m <sup>2</sup>
EM8923	17	Red	m <sup>2</sup>

### End Profile

Code	Height (mm)	Finish	Size
EMCAP12	12	Black	3



Open Rollable  
Construction



Internal & External  
(with Rubber)



Medium-Heavy &  
Light Wheeled Traffic



10, 12 & 17mm



0-15 Kg/m<sup>2</sup>  
dependent on depth



Offices / Schools  
Apartments



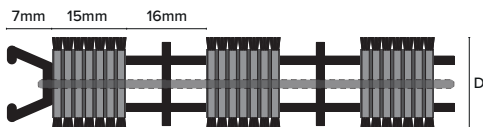
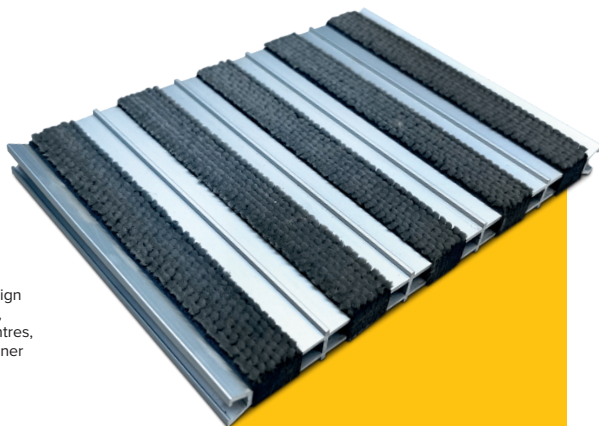
5 Insert Options

# TrakMat®

## AMSTERDAM

TrakMat® AMSTERDAM is the ideal matting solution for busy entrances in public buildings. It is extremely durable and will withstand the toughest of wear conditions with minimum maintenance required.

Acknowledged by key operators in building design and maintenance to have a proven track record, AMSTERDAM is installed in major Shopping Centres, Retail Stores, Hospitals, Universities and all manner of commercial sites throughout the UK.



Black  
Rubber

Black

Grey

### TrakMat® HDR - Exterior Rubber

Code	Height (mm)	Finish	Size
EMR8030	18	Black	m <sup>2</sup>

### TrakMat® HDR - Superior Buffed

Code	Height (mm)	Finish	Size
EMR8000	18	Grey	m <sup>2</sup>
EMR8016	18	Black	m <sup>2</sup>
EMR8002	12	Grey	m <sup>2</sup>
EMR8003	12	Black	m <sup>2</sup>



**Closed  
Construction**



**Internal & External  
(with Rubber)**



**Heavy Traffic**



**12 & 18mm**



**15-17 kg/m<sup>2</sup>  
dependent on depth**



**Supermarkets  
Shopping Centres  
Infrastructure /  
Schools**



**2 Insert Options**



TrakMat



+44 (0)1642 713000 [www.genesis-gs.com](http://www.genesis-gs.com)

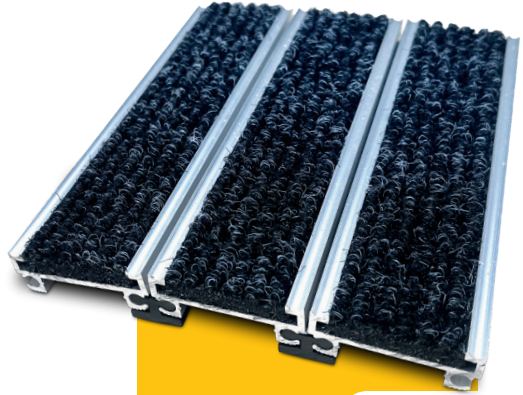
Page 7

# TrakMat®

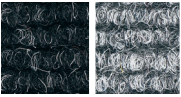
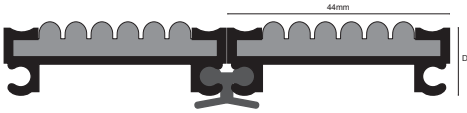
## TOKYO

TrakMat® TOKYO is a heavy duty primary entrance mat with exceptional performance. The closed construction ensures that all debris is captured by the mat surface for a convenient cleaning operation. Suitable for both foot and trolley traffic, the design features deep profile aluminium scraper treads for maximum effect.

The matting is assembled by means of a PVC hinge which features an integral damper strip.

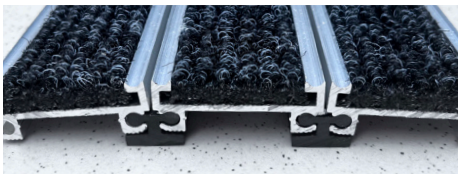


**SUPPLY & FIT**



Anthracite Grey

Code	Height (mm)	Finish
EM2030	17	Anthracite
EM2031	17	Grey
EM2250	22	Anthracite
EM2251	22	Grey



**Closed Construction**



**Internal**



**Heavy & light wheeled traffic**



**17 & 22mm**



**13-15 kg/m² dependent on depth**



**Offices / Schools  
Apartments  
Supermarkets**

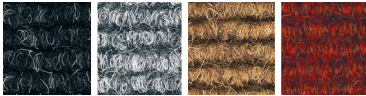
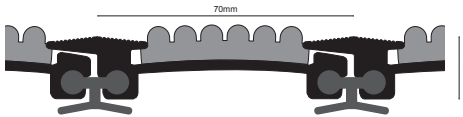


**2 Insert Options**

# TrakMat®

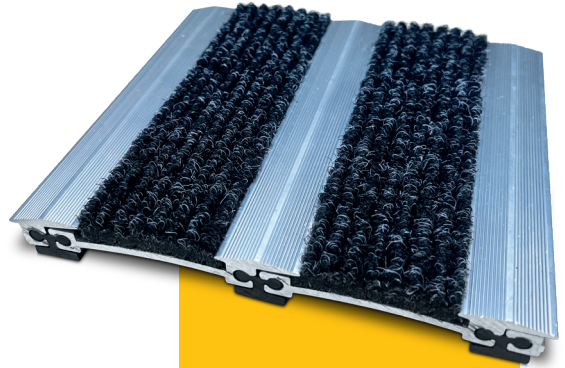
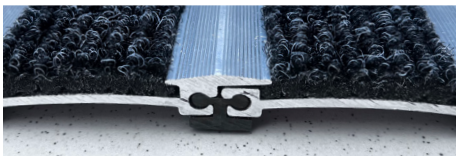
## NEW YORK

TrakMat® NEW YORK has an arch form heavy gauge aluminium chassis capable of withstanding extreme traffic in the most demanding of applications. Where 24hr exposure to maintenance and access equipment, wheelchairs, shopping trolleys and the like is expected, NEW YORK can be specified with confidence. 42mm wide wiper strips provide optimum contact area for absorbency and soil collection.



Anthracite Grey Natural Red

Code	Height (mm)	Finish
EM8020	15	Anthracite
EM8021	15	Grey
EM8022	15	Natural
EM8023	15	Red
EM8240	19	Anthracite
EM8241	19	Grey
EM8242	19	Natural
EM8243	19	Red



**SUPPLY & FIT**



**Closed Construction**



**Internal**



**Extreme & all wheeled traffic**



**15 & 19mm**



**18-20 kg/m<sup>2</sup> dependent on depth**



**Supermarkets Shopping Centres Infrastructure / Schools**



**4 Insert Options**



TrakMat

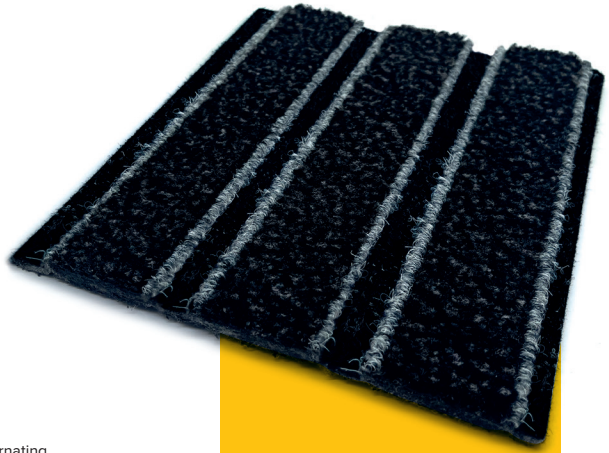


+44 (0)1642 713000 [www.genesis-gs.com](http://www.genesis-gs.com)

Page 9

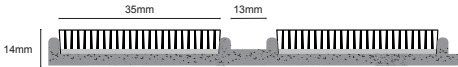
# TrakMat®

## LYON



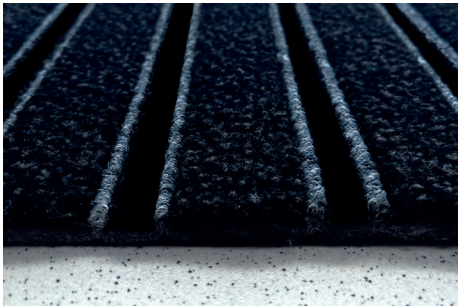
A unique modular solution which consists of alternating scraping and drying polyamide strips, together with a dirt collection zone which allows for up to 10 times more dust holding capacity than an unstructured textile mat.

1m<sup>2</sup> (6pcs) per box, each tile 235 x 750mm.



Anthracite

Code	Height (mm)	Finish
EM8550	14	Anthracite



**Open Modular Construction**



**Internal**



**Medium & light wheeled traffic**



**14mm**



**5.7 kg/m<sup>2</sup>**

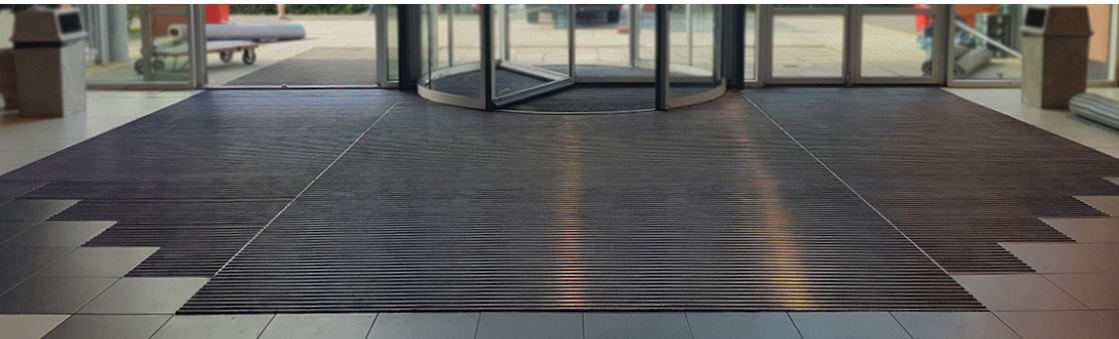


**Schools / Offices / Supermarkets**

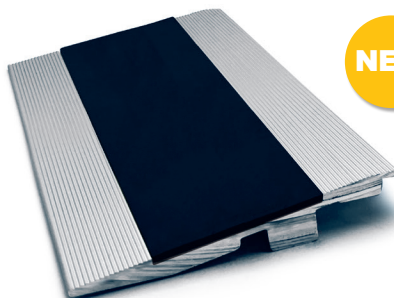
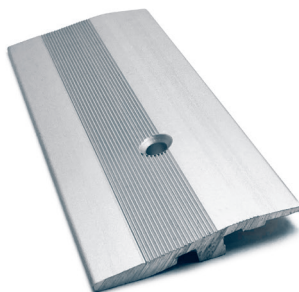
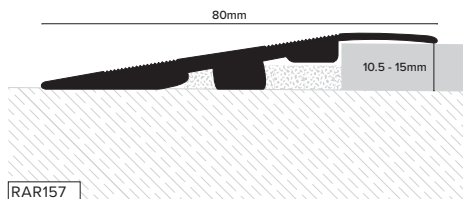
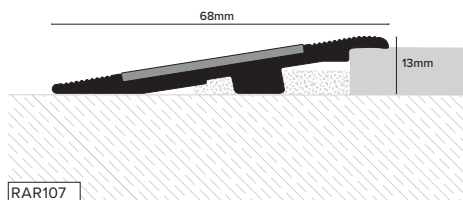
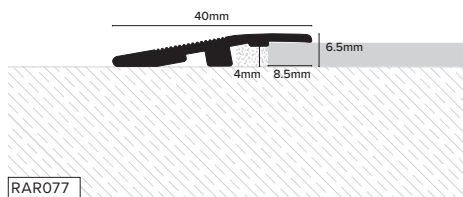


**Anthracite Insert**

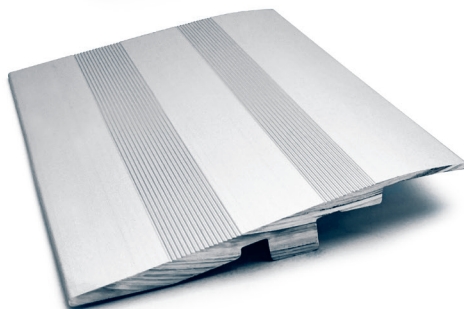




## RAR Aluminium Reducer



**NEW**



Code	H (mm)	L (m)	Box Qty
RAR077.81	5 - 7	2.7	10
RAR107.81	13	2.7	10
RAR157.81	10.5 - 15	2.7	10

RAR077 - for carpet tiles, loose lay PVC tiles etc.

RAR107 - available with all 38mm insert colours (see opposite).

RAR157 - for easy access with pallet trucks, trolleys and wheelchairs.

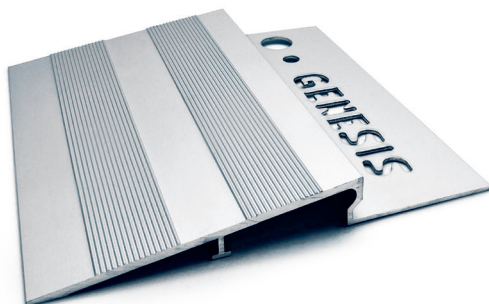
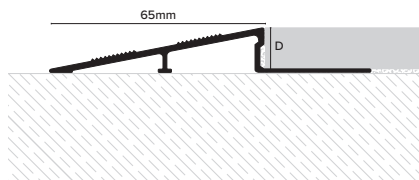
### Standard Insert

<b>01</b> White LRV: 79.9	<b>16</b> Black LRV: 4.5	<b>20</b> Brown LRV: 9.1	<b>25</b> Beige LRV: 41.1	<b>27</b> Canvas LRV: 53.2
<b>30</b> Red LRV: 10.6	<b>43</b> Dolphin Grey LRV: 27.6	<b>44</b> Ice Grey LRV: 42.1	<b>46</b> Midnight Grey LRV: 12.8	<b>47</b> Yellow LRV: 55.7
<b>48</b> Cobalt Blue LRV: 9.2	<b>58</b> Cloud LRV: 59	<b>68</b> Haze LRV: 66.2	<b>78</b> Sand LRV: 70.3	

### Tredsafe® Insert

<b>601</b> White LRV: 49.9	<b>616</b> Black LRV: 4.6	<b>621</b> Safety Blue LRV: 10.8	<b>643</b> Dolphin Grey LRV: 11.5	<b>647</b> Yellow LRV: 48.1
----------------------------------	---------------------------------	--	---	-----------------------------------

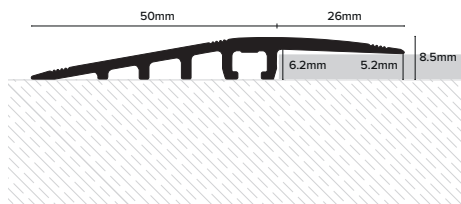
## RAA Aluminium Access Ramp



Code	W x D (mm)	L (m)	Box Qty
RAA104.81	65 x 10	2.5	10
RAA124.81	65 x 12.5	2.5	10

Genesis RAA is an Aluminium ramp designed to provide a neat, clean transition from two floor coverings of different heights. Simple to install the RAA provides a perfect safe secure finish to the flooring installation

## RAW Heavy Duty Aluminium Reducer

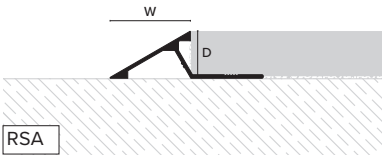
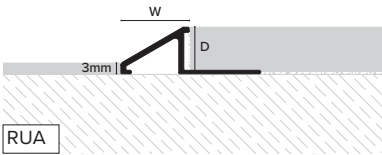


Code	H (mm)	L (m)	Box Qty
RAW057.81	5	2.7	10

Pre drilled

Suitable for use in heavy traffic environments, and is ideal for use in environments subject to wheeled traffic e.g. wheelchairs and shopping trolleys.

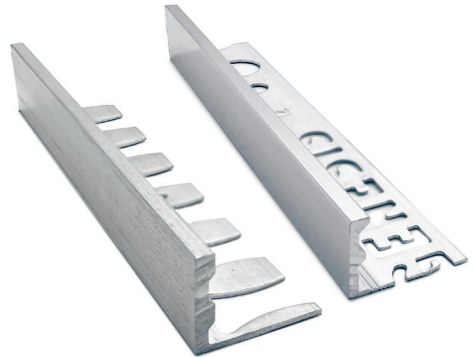
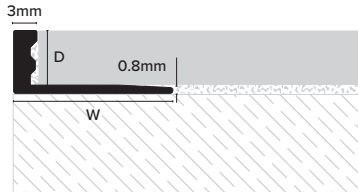
RSA & RUA Aluminium Tile Ramp



Code	W x D (mm)	L (m)	Box Qty
RSA104.81	20 x 10	2.5	20
RSA124.81	23 x 12	2.5	20
RUA104.81	16 x 10	2.5	20
RUA124.81	19 x 12	2.5	20

Aluminium ramp designed to provide a neat, clean transition from two floor coverings of different heights. Simple to install these profiles provide a perfect safe secure finish to your flooring installation.

## ESA Straight Edge & EFA Formable Frame



Code	D (mm)	L (m)	Box Qty
ESA100.80	10	2.7	20
ESA120.80	12	2.7	20
ESA150.80	15	2.7	20
ESA180.80	18	2.7	20
ES225.80	22.5	2.7	20

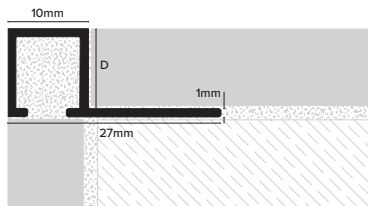
### Formable

Code	D (mm)	L (m)	Box Qty
EFA100.80	10	2.7	20
EFA120.80	12	2.7	20
EFA150.80	15	2.7	20
EFA180.80	18	2.7	20

A comprehensive range of profiles designed to protect corners avoiding the unsightly and fragile 45° cut. The defined square edge clearly outlines coverings such as rectified porcelain stoneware. Available in different materials, colours and finishes, these profiles offer a practical and aesthetic solution, ideal for walls and floors.

Coated profiles supplied with a transparent protective film offering protection during transport, storage, simply peel off after installation.

## TDP Square Frame



Code	D (mm)	L (m)	Box Qty
TDP100.81	10	2.5	20
TDP120.81	12	2.5	20
TDP225.81	22.5	2.5	20

An alternative to an ordinary straight edge profile, the TDP offers a more luxurious finish. The extruded Aluminium profile gives a square appearance when installed and is also available with corner pieces (EDP) to obviate sharp edges when mitring is necessary.

Anodised finishes are supplied with a transparent protective film offering protection during transport and storage, simply peel off after installation.





# Genesis

For the Perfect Finish

Tel: +44 (0)1642 713000 Email: [info@genesis-gs.com](mailto:info@genesis-gs.com)

[www.genesis-gs.com](http://www.genesis-gs.com)

**Genesis Global Systems Ltd**

Head Office: Stokesley Business Park Stokesley North Yorkshire TS9 5JZ



## Colombia

**Genesis LatAm SAS**

Carrera 16A, #163A-05, Bogotá, 110131. Colombia

Tel: +57 (1) 805 1235 Email: [ventas@genesis-latam.com](mailto:ventas@genesis-latam.com)

[www.genesis-latam.com](http://www.genesis-latam.com)

## India

**Genesis Profile Systems India PVT. Limited**

SURYA WAREHOUSE, Door Nos. 21/562-B & 21/562-C, Marathakkara Village, Thrissur, Kerala 680306

Tel: +91 0487 2355 577 Email: [sales@genesis-gs.in](mailto:sales@genesis-gs.in)

[www.genesis-gs.in](http://www.genesis-gs.in)