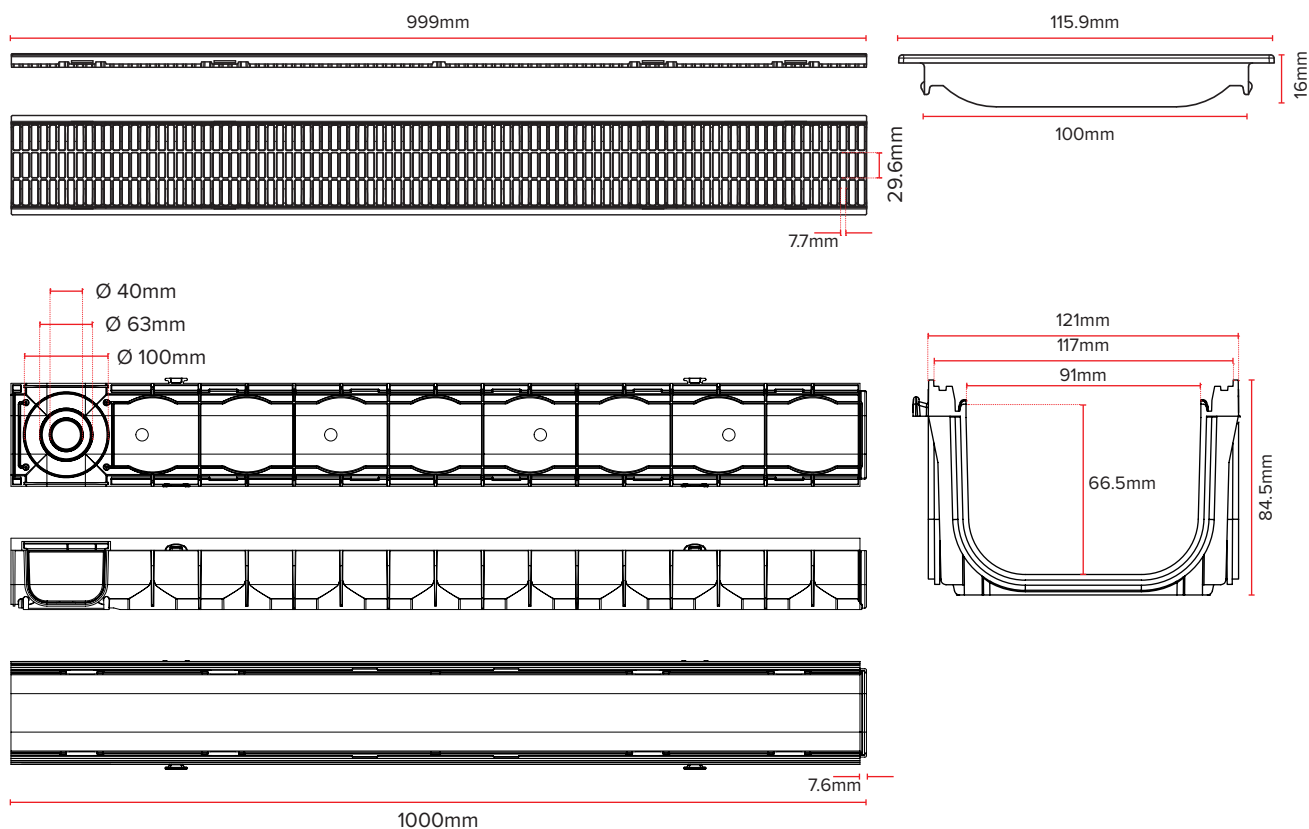
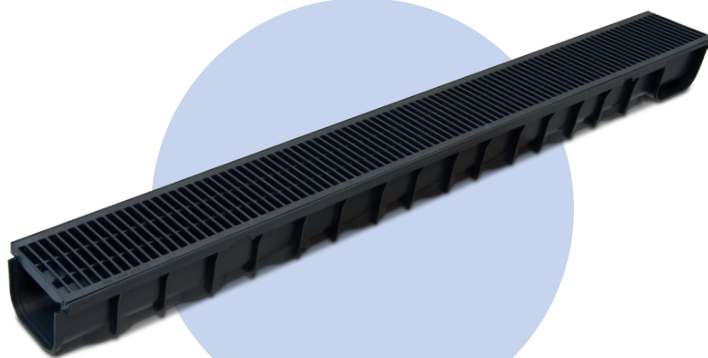
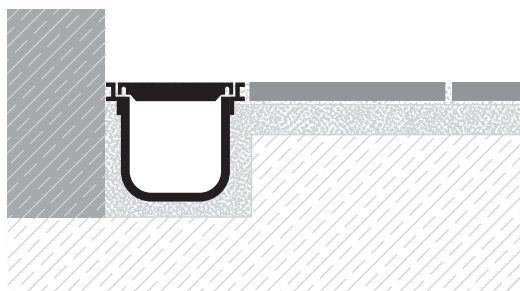


# MCPP



Code	Description	Dimensions (mm)	Weight	Colour	Pkg. / Pallet
MCPP1284.16	Midi channel with PP Grating	121 x 84 x 1.000	1.14 kg/pc.	Black	1 pc. / 140 pcs

## Product Description

Used for the collection and drainage of rainwater.

The matching to its range of gratings allows the use in pedestrian or light traffic areas.

## Technical Information

Made of PP (polypropylene) and PP grating.

Engineered and reinforced for a high resistance.

Bottom outlet are  $\varnothing$  40/63/100 mm

Load class A15, according to UNI EN 1433

The following information was obtained from test reports supplied by the notified body BUILDING RESEARCH INSTITUTE - NISI, identification number NB 2032 of the European commission -

Essential characteristics*	Unit	Performance	Requirement according to EN 1433:2002 EN 1433:2002/ A1:2005
CLASS OF LOAD		A15	
Water tightness		Pass the test	No escape of water shall be noticed
Residual deformation	mm	0.1	< 0.35
Full load test of channel with grating		Pass the test	No crack shall be noticed on the test sample

## Accessories

End caps for Channel Midi.

Adapter for Channel Midi.

Allows to get the channel output from 100 to 110 mm.

Install using the 4 screws supplied.

Made of polypropylene

The end caps are used as terminals for the channel.

Adapts the output to a diameter of 110 mm.



Code	Rif.	Product	(mm)	Pkg.	Pallet (cm)	UM
MCEC	01	End Caps for Midi Channel (2 pcs./pack)		200 set	2.000 set (100 x 120 x 105)	set
MCAD	02	Midi Channel Adapter complete with 4 screws	$\varnothing$ 110	100 pc.	1.500 pc. (100 x 120 x 110)	pc.

