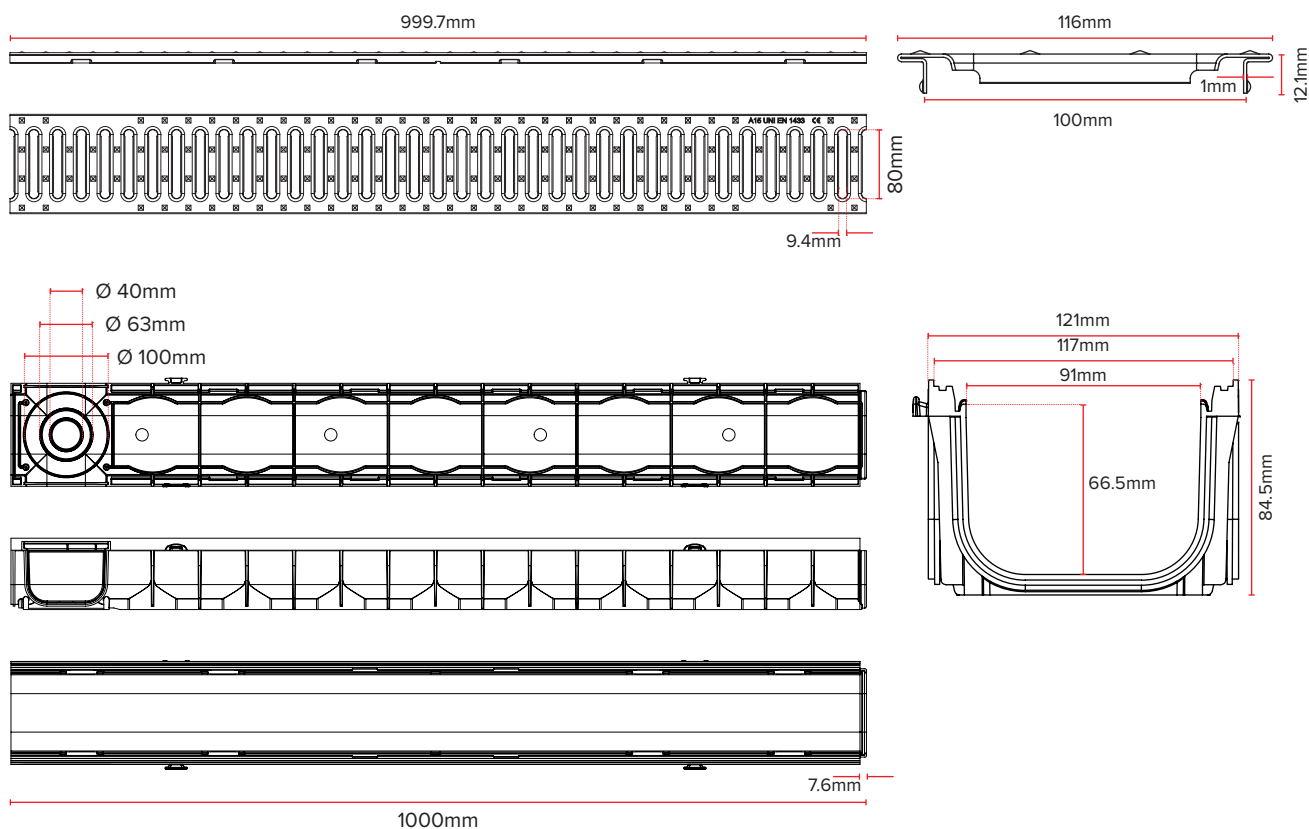
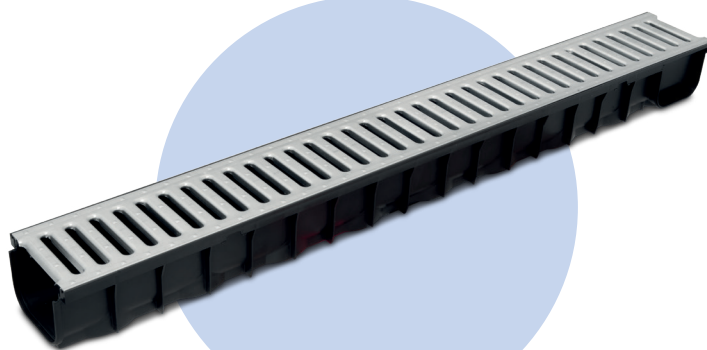
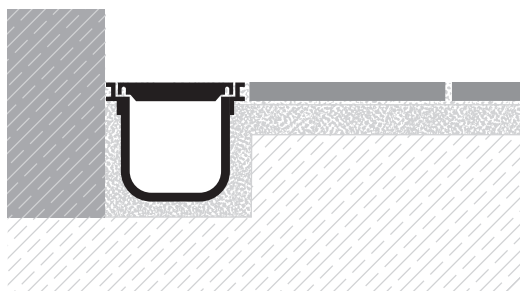


MCGS



Code	Description	Dimensions (mm)	Weight	Colour	Pkg. / Pallet
MCGS1284.84	Midi channel with Galvanized Steel Grating	121 x 84 x 1,000	1,715 kg/pc.	Black	1 pc. / 140 pcs

Product Description

Used for the collection and drainage of rainwater.

The matching to its range of gratings allows the use in pedestrian or light traffic areas.

Technical Information

Made of polypropylene and Galvanized Steel grating.

Engineered and reinforced for a high resistance.

Bottom outlet are \varnothing 40/63/100 mm

Load class A15, according to UNI EN 1433

The following information was obtained from test reports supplied by the notified body BUILDING RESEARCH INSTITUTE - NISI, identification number NB 2032 of the European commission -

Essential characteristics*	Unit	Performance	Requirement according to EN 1433:2002 EN 1433:2002/ A1:2005
CLASS OF LOAD		A15	
Water tightness		Pass the test	No escape of water shall be noticed
Residual deformation	mm	0.1	< 0.35
Full load test of channel with grating		Pass the test	No crack shall be noticed on the test sample

Accessories

End caps for Channel Midi.

Adapter for Channel Midi.

Allows to get the channel output from 100 to 110 mm.

Install using the 4 screws supplied.

Made of polypropylene

The end caps are used as terminals for the channel.

Adapts the output to a diameter of 110 mm.



Code	Rif.	Product	(mm)	Pkg.	Pallet (cm)	UM
MCEC	01	End Caps for Midi Channel (2 pcs./pack)		200 set	2.000 set (100 x 120 x 105)	set
MCAD	02	Midi Channel Adapter complete with 4 screws	\varnothing 110	100 pc.	1.500 pc. (100 x 120 x 110)	pc.

