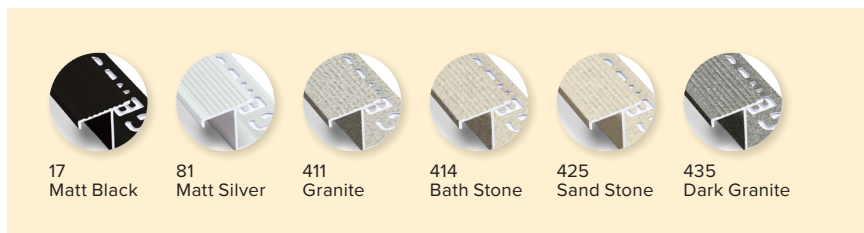
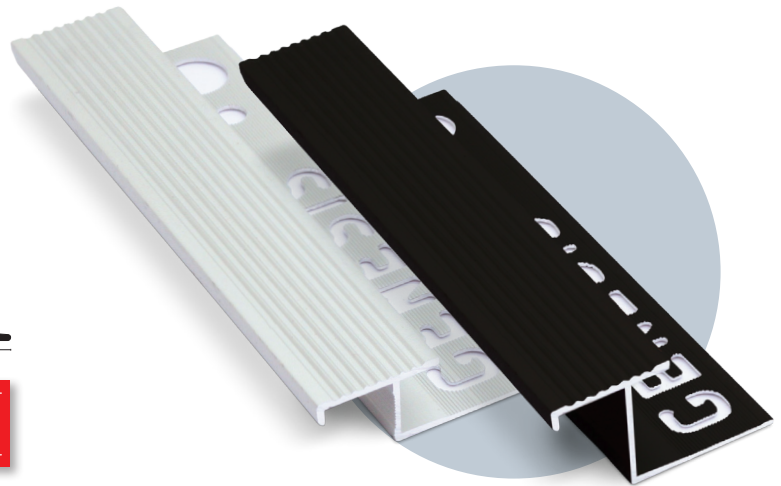
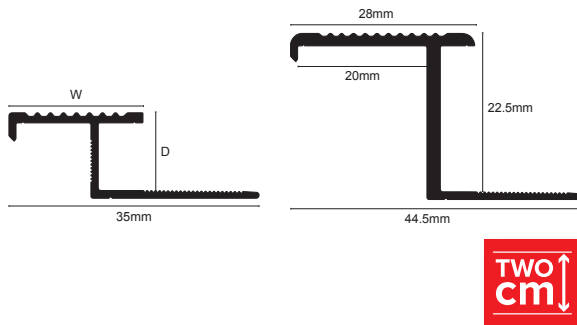


NLT



Product Description

Genesis NLT is a simple well designed, innovative Aluminium profile designed to provide a simple, safe secure edge for steps covered in ceramic tiles or similar. The flange sits underneath the tile and the top section or tread protects the riser tile and prevents water ingress into the joint gap. The top section also provides a perfect step edge with a grooved profile face for extra grip. Finally the top section has a small lip to further protect the top edge of the tile and prevent damage.

Technical Details

NLT profiles are available in different anodised finishes and powder coated finishes - All natural Aluminium (Mill Finish) has a oxide film of approx 0.2 microns, when Mechanically & Chemically polished the anodising process increases this to 5 microns, up-to 20 for the Matt finish and 100 for powder coated.

Aluminium AA 6063 T6 / UNS A96063 anodised to DIN 17611

Si%	0.2-0.6
Fe%	0.35
Cu%	0.1
Mn%	0.1
Mg%	0.45-0.9
Zn%	0.1
Ti%	0.1
Cr%	0.1
Al	Balance

Maintenance

Genesis NLT does not require any special maintenance. Oxidisation film on Aluminium may be removed with a common polishing agent; however, they do reoccur.

Damaged anodised finishes may only be repaired by re-coating. Aluminium must be tested to verify its suitability if chemical stresses are anticipated. Cementitious materials, in conjunction with moisture, become alkaline.

Since aluminium is sensitive to alkaline substances, exposure to the alkali (depending on the concentration and time of exposure) may result in corrosion (aluminium hydroxide formation). Therefore, it is important to remove adhesive or grout residue from visible surfaces.

In addition ensure that the profile is solidly embedded in the setting material and that all cavities are filled to prevent the collection of alkaline water. The anodised layer creates a finish that retains a uniform appearance during normal use. The surface, however, is susceptible to scratching and wear and may be damaged by tile adhesive, mortar, or grouting material.

Therefore, setting materials must be removed immediately. Otherwise, the description regarding Aluminium applies.

Dimensions

Available in 2.8m lengths.

Depths 10 and 12mm with step tread of 19mm (W).

22.5mm depth with step tread of 28mm (W).

Installation

When installing with Tile Adhesive this should offer adequate fixing, however, if required most tile in nosings offer a mechanic fixing method using 5mm holes within the flange making them suitable for Wood and Laminate floors that do not require Tile adhesive.

1. Check the fit of the nosing and ensure the profile is the correct height and width for the step and floorcovering.
2. Install the floorcovering on the riser.
3. Place the nosing firmly on the step and if necessary mark the floor.
4. Drill and Plug the floor if Mechanically fixing.
5. Apply the adhesive using a suitable notched trowel to the manufacturers recommendations.
6. Bed the profile into the adhesive ensuring that the adhesive comes through all the flange holes, spread the adhesive over the top of the flange before installing tiles.
7. A grout gap is not required however if visible ensure that grout is compressed firmly within the gap.