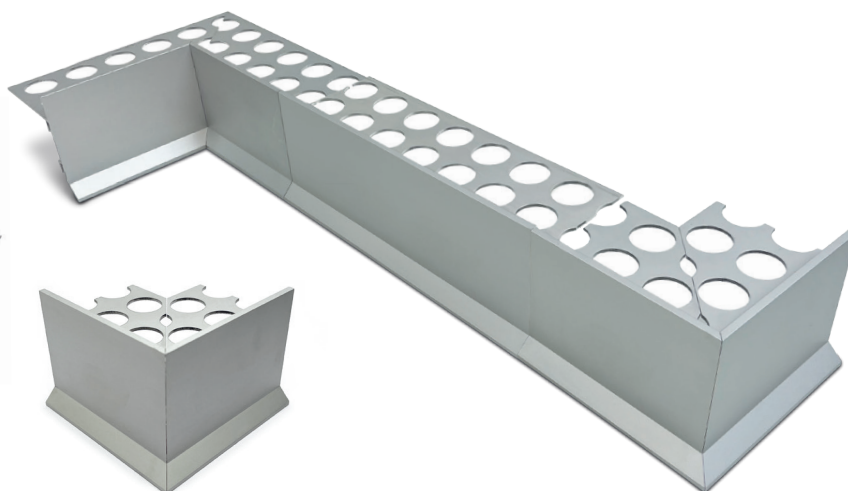
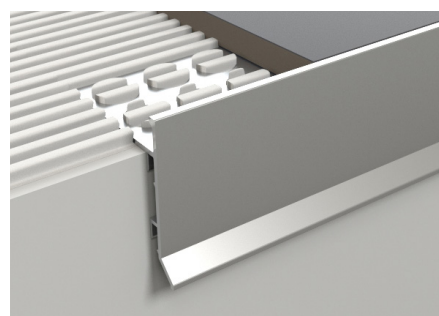
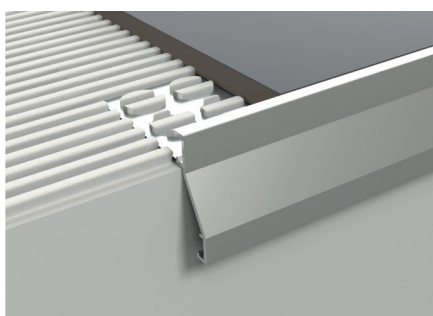
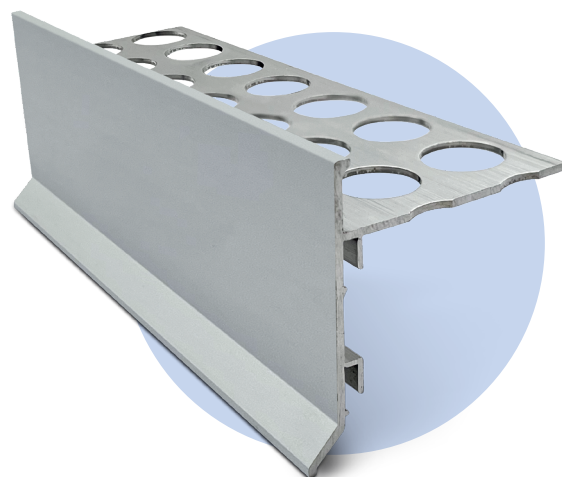
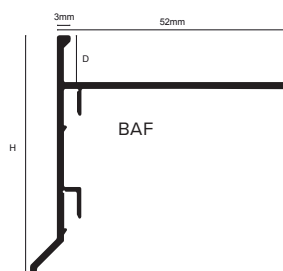
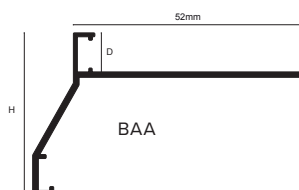


# BAA / BAF



## Product Description

Aluminium edging profiles designed to protect the edges of tiles on terraces and balconies and to allow the correct water dispersion away from the fascia providing protection and aesthetic longevity. The profile is provided with a perforated anchoring flange that ensures perfect fastening of the profile to the substrate and a vertical side, protecting the edge of the flooring, partly bended outwards in order to allow the downflow of water.

Each profile is supplied with pin connectors to ensure secure continuity during installation..

## Dimensions

Available in both 10 and 12mm heights, standard lengths of 2.5m

## Allied Products

The full range is available with prefabricated internal / external corners and profile connectors.



## Technical Details

Profiles are available in different anodised finishes and powder coated finishes - All natural Aluminium (Mill Finish) has a oxide film of approx 0.2 microns, when Mechanically and Chemically polished the anodising process increases this to 5 microns, up-to 20 for the Matt finish and 100 for Powder coated.

### Aluminium AA 6063 T6 / UNS A96063 anodised to DIN 17611

Si%	0.2-0.6
Fe%	0.35
Cu%	0.1
Mn%	0.1
Mg%	0.45-0.9
Zn%	0.1
Cr%	<0.01
Al	Balance

## Maintenance

Balcony profiles do not require any special maintenance. Oxidation films on Aluminium may be removed with a common polishing agent; however, they do reoccur. Damaged anodised finishes may only be repaired by recoating.

Aluminium must be tested to verify its suitability if chemical stresses are anticipated.

Cementitious materials, in conjunction with moisture, become alkaline. Since aluminium is sensitive to alkaline substances, exposure to the alkali (depending on the concentration and time of exposure) may result in corrosion (aluminium hydroxide formation). Therefore, it is important to remove adhesive or grout residue from visible surfaces. In addition, ensure that the profile is solidly embedded in the setting material and that all cavities are filled to prevent the collection of alkaline water.

The anodised layer creates a finish that retains a uniform appearance during normal use. The surface, however, is susceptible to scratching and wear and may be damaged by tile adhesive, mortar, or grouting material. Therefore, setting materials must be removed immediately. Otherwise, the description regarding aluminium applies.

## Installation

1. Select profile according to tile thickness.
2. Apply the desired waterproofing system, sealing the joint between the profile and waterproofing, trowel tile adhesive over the area that forms the perimeter of the tiled covering.
3. Trowel additional adhesive over the perforated anchoring leg to ensure full coverage, the waterproofing material must reach the angled edge of the profile. Observe the installation instructions of the manufacturer for the installation of bonded waterproofing systems
4. Solidly embed the tiles so that the tiled surface is flush with the top of the profile, the profile should not be higher than the tiled surface, but rather up to approximately 1 mm lower.
5. Fill the joint completely with grout

The applicable installation instructions and guidelines for the covering assemblies must be observed. All materials used in the assembly must be weather resistant, waterproof, and suitable for outdoor areas.