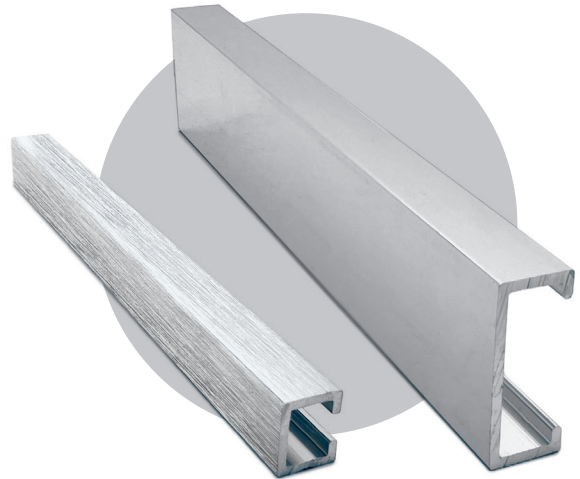
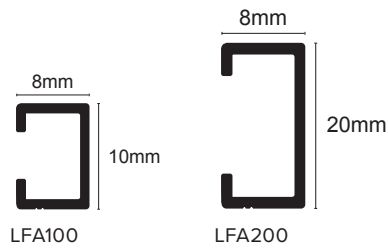
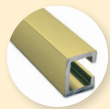
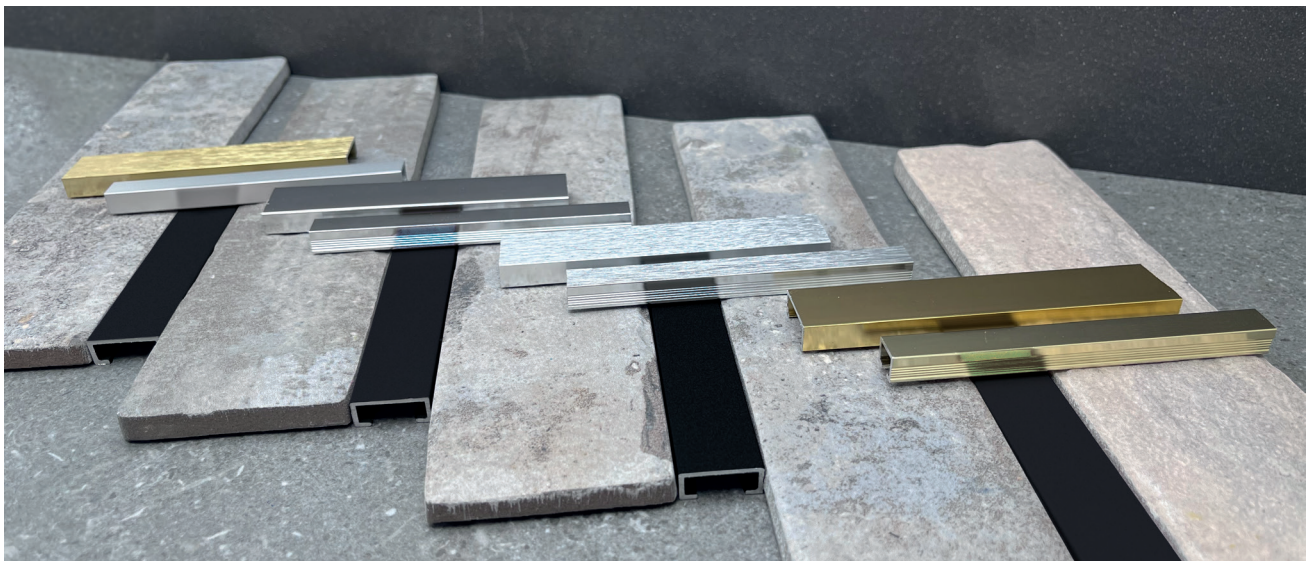


LFA

16
Black17 Matt
Black81 Matt
Silver86 Bright
Brass90 Brushed
Brass91 Bright
Silver94 Brushed
Silver

Product Description

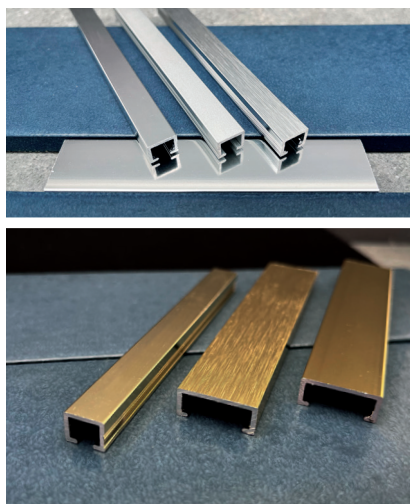
Genesis LFA is a flat decorative Aluminium profile designed to create a feature in ceramic wall tile installations. The suitability of aluminium must be determined if chemical or mechanical stresses are anticipated.

Dimensions

All available in 2.5m lengths and 10mm and 20mm widths

External Use

Bright and brushed finishes are not suitable for environments with direct UV exposure or where mechanical cleaning operations occur.



Technical Details

Genesis Aluminium Profiles are available in different anodised finishes and powder coated finishes – All natural Aluminium (Mill Finish) has an oxide film of approx. 0.2 microns, when Mechanically & Chemically polished the anodising process increases this to 5 microns, up-to 20 microns for the matt finish and 100 for powder coated.

Aluminium AA 6063 T6 / UNS A96063 anodised to DIN 17611

Si%	0.2-0.6
Fe%	0.35
Cu%	0.1
Mn%	0.1
Mg%	0.45-0.9
Zn%	0.1
Cr%	<0.01
Al	Balance

Maintenance

Genesis LFA does not require any special maintenance. Oxidation films on Aluminium may be removed with a common polishing agent; however, they do reoccur. Damaged anodised finishes may only be repaired by re-coating.

Aluminium must be tested to verify its suitability if chemical stresses are anticipated. Cementitious materials, in conjunction with moisture, become alkaline. Since aluminium is sensitive to alkaline substances, exposure to the alkali (depending on the concentration and time of exposure) may result in corrosion (aluminium hydroxide formation). Therefore, it is important to remove adhesive or grout residue from visible surfaces. In addition, ensure that the profile is solidly embedded in the setting material and that all cavities are filled to prevent the collection of alkaline water.

The anodised layer creates a finish that retains a uniform appearance during normal use. The surface, however, is susceptible to scratching and wear and may be damaged by tile adhesive, mortar, or grouting material. Therefore, setting materials must be removed immediately. Otherwise, the description regarding aluminium applies.

Installation

1. Cut profile to desired length.
2. Trowel tile adhesive over the area.
3. Press the LFA profile into place and align on top of the already laid tile.
4. Solidly embed the tiles so that the tiled surface is flush with the top of the profile, the profile should not be higher than the tiled surface.
5. Fill the joint completely with grout.