



## Case Study - Leisure

### Riverside Stadium - Middlesbrough

#### Project Specifications

---

Product Specified: NHD11

Colour Specified: Red and White

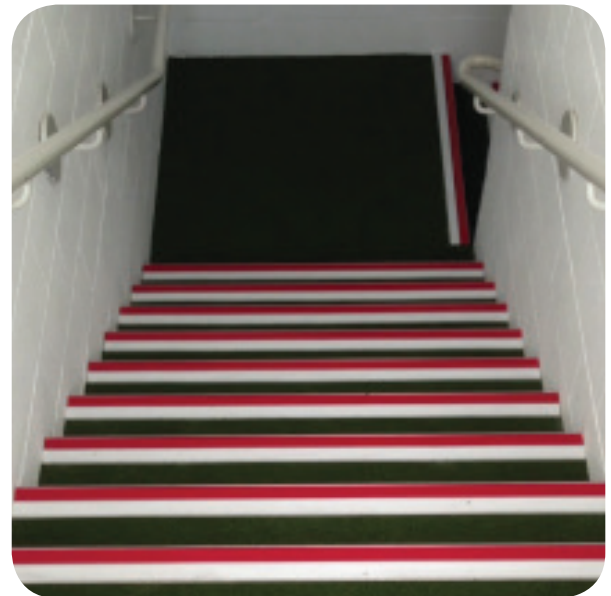
Sector: Leisure

#### Project Description

---

For Genesis Middlesbrough FC is the local team of most of the staff and when Cleveland Land Services Ltd were doing work to the stairs leading to the Directors Box at the stadium we were pleased they kept the work local and went with a Genesis Heavy Duty Nosing.

The NHD range is designed for use with Carpet, Carpet Tiles or other resilient flooring in heavy use areas and the Double Channel design chosen not only allowed for the team colours to be utilised but also provides a wider area of anti-slip tread for areas of high traffic.



+44 (0)1642 713000 [info@genesis-gs.com](mailto:info@genesis-gs.com)  
[www.genesis-gs.com](http://www.genesis-gs.com)

 **Genesis**  
For the Perfect Finish