



## Case Study - Education

### Churchill College - Cambridge

#### Project Specifications

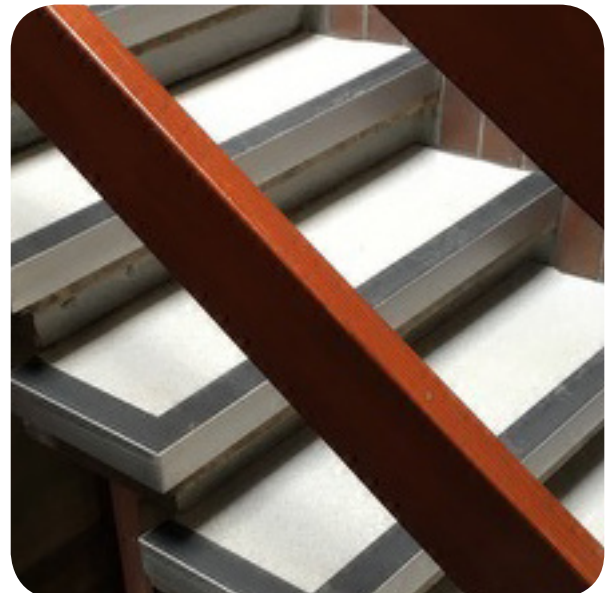
Product Specified: NSL19

Colour Specified: Black Insert

Sector: Education

#### Project Description

NSL19 with a black insert has been used to cover staircases at Churchill College, Cambridge. Over 90 pre-mitred, welded returns with dressed finishes have been used.



+44 (0)1642 713000 [info@genesis-gs.com](mailto:info@genesis-gs.com)  
[www.genesis-gs.com](http://www.genesis-gs.com)

 **Genesis**  
For the Perfect Finish